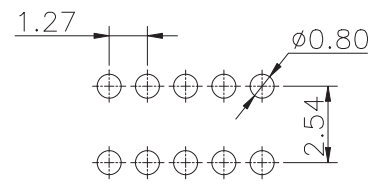


Specifications
 Current Rating:1.0Amp
 Insulation Resistance:1000MΩMin.
 Dielectric Withstanding Voltage:300VAC
 Contact Resistance:20mΩMax.
 Operating Temperature:-40°C to +105°C
 Materials
 Contact Material:Brass
 Insulator Material:High Temperature Thermoplastic, UL 94V-0 LCP or the equivalent material
 All materials must meet greenconn hazardous substances control standards.

Recommended P.C.Board Layout
 (Tolerance:±0.05)



No. of PIN/ROW	Dimension Information		No. of PIN/ROW	Dimension Information	
	L	M		L	M
02	2.54	1.27	27	34.29	33.02
03	3.81	2.54	28	35.56	34.29
04	5.08	3.81	29	36.83	35.56
05	6.35	5.08	30	38.10	36.83
06	7.62	6.35	31	39.37	38.10
07	8.89	7.62	32	40.64	39.37
08	10.16	8.89	33	41.91	40.64
09	11.43	10.16	34	43.18	41.91
10	12.70	11.43	35	44.45	43.18
11	13.97	12.70	36	45.72	44.45
12	15.24	13.97	37	46.99	45.72
13	16.51	15.24	38	48.26	46.99
14	17.78	16.51	39	49.53	48.26
15	19.05	17.78	40	50.80	49.53
16	20.32	19.05	41	52.07	50.80
17	21.59	20.32	42	53.34	52.07
18	22.86	21.59	43	54.61	53.34
19	24.13	22.86	44	55.88	54.61
20	25.40	24.13	45	57.15	55.88
21	26.67	25.40	46	58.42	57.15
22	27.94	26.67	47	59.69	58.42
23	29.21	27.94	48	60.96	59.69
24	30.48	29.21	49	62.23	60.96
25	31.75	30.48	50	63.50	62.23
26	33.02	31.75			

Ordering Information

XB-PZ-A-127-211

- Plastic specifications
 - 1=Single row
 - 2=Dual row
 - 3=Tripe row
 - 4=Quadruple
- Water code
- No. of Pins per Row 02~50
- Positioning column information
 - A=No locating post
 - B=Round post
 - C=Square post
- Pin length See the drawing
- Color
 - 1=Black
 - 2=White
 - 3=Yellow
 - E=Beige
- Packing code
 - A=Box
 - B=Tray
 - C=Tube
 - D=Tape&Reel
 - E=Cap+Tube
 - F=Cap+Tape&Reel
 - G=Acetate Tape+Reel
 - H=Acetate Tape+Tape&Reel
- Plating code
 - 01=Tin
 - 02=Gold Flash
 - 05=Gold Flash/Tin
 - 22=Matte Tin
- Insulator Material
 - A=PBT
 - R=Nylon(Halogen Free)
 - C=LCP
- Contact Material
 - A/S/K/T=Phosphor Bronze
 - B/Z/H/W=Brass

东莞市溪榜电子有限公司
 DONG GUAN XI BANG ELECTRONICS CO., LTD.
 Switch Connector

REV. 01	UNIT. mm	SCALE. 4:1	PAGE. 1/1
---------	----------	------------	-----------

GENERAL TOLERANCE	
X.*±5.0°	X.±0.30
.X*±3.0°	.X±0.25
.XX*±2.0°	.XX±0.15
.XXX*±1.0°	.XXX±0.10

DWG. NO.
XB-PZ-A-127-211

PART NO.
XB-PZ-A-127-211

TITLE.
**1.27 PIN HEADER
 DUAL ROWS DIP TYPE
 CONNECTOR**

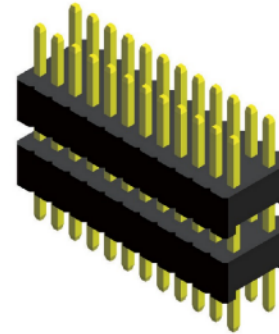
Specifications

Current Rating : 1.0 Ampere
 Insulation Resistance : 1000 MΩ Min
 Dielectric Withstanding : 300V AC
 Contact Resistance : 20 mΩ Max
 Operating Temperature : -40°C to +105°C

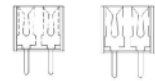
Materials

Contact Material : Brass
 Insulation Material : High Temperature Thermoplastic, 94V-0 LCP

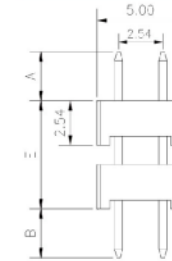
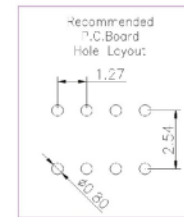
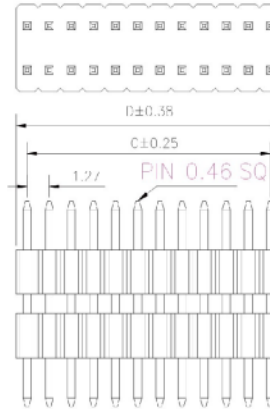
All materials must meet Greenconn's requirements for environmental protection.



Mating with



C33 C36



* For Coded Dimension Not Inside The Table, Please Refer To "Ordering Information"

No. of Pins/Row	Dimension Information		No. of Pins/Row	Dimension Information		No. of Pins/Row	Dimension Information		No. of Pins/Row	Dimension Information	
	C	D		C	D		C	D		C	D
02	1.27	2.54	11	12.70	13.97	21	25.40	26.67	31	38.10	39.37
03	2.54	3.81	12	13.97	15.24	22	26.67	27.94	32	39.37	40.64
04	3.81	5.08	13	15.24	16.51	23	27.94	29.21	33	40.64	41.91
05	5.08	6.35	14	16.51	17.78	24	29.21	30.48	34	41.91	43.18
06	6.35	7.62	15	17.78	19.05	25	30.48	31.75	35	43.18	44.45
07	7.62	8.89	16	19.05	20.32	26	31.75	33.02	36	44.45	45.72
08	8.89	10.16	17	20.32	21.59	27	33.02	34.29	37	45.72	46.99
09	10.16	11.43	18	21.59	22.86	28	34.29	35.56	38	46.99	48.26
10	11.43	12.70	19	22.86	24.13	29	35.56	36.83	39	48.26	49.53
			20	24.13	25.40	30	36.83	38.10	40	49.53	50.80

XB 东莞市溪榜电子有限公司
 DONG GUAN XI BANG ELECTRONICS CO., LTD.

REV. 01 UNIT. mm SCALE. 5:1 PAGE. 1/1

GENERAL TOLERANCE	
X.* ± 5.0'	X. ± 0.30
.X' ± 3.0'	.X ± 0.25
.XX' ± 2.0'	.XX ± 0.15
.XXX' ± 1.0'	.XXX ± 0.10

DESIGN:	DATE:
CHECKED:	DATE:
AUDITED:	DATE:
APPROVED:	DATE:

DWG. NO. XB-PZ-A-127-211
 PART NO. XB-PZ-A-127-211

TITLE:
 2.00 FEMALE HEADER
 SINGLE ROW DIP TYPE
 BASE 4.30H