

1 2 3 4 5 6 7 8 9

F

E

D

C

B

A

F

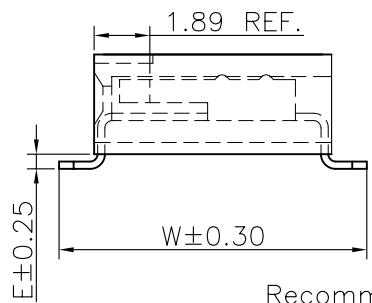
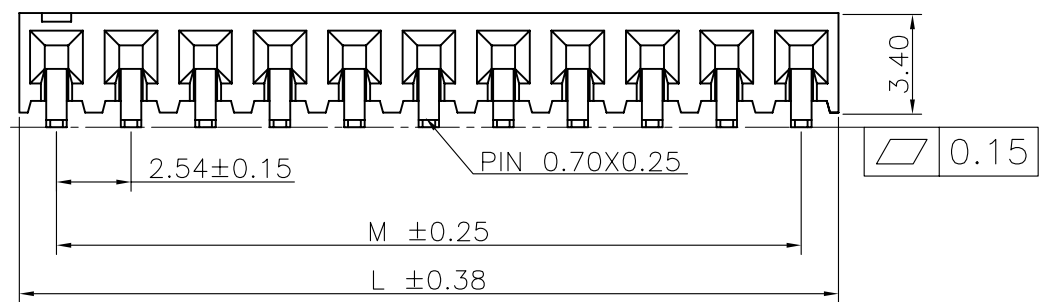
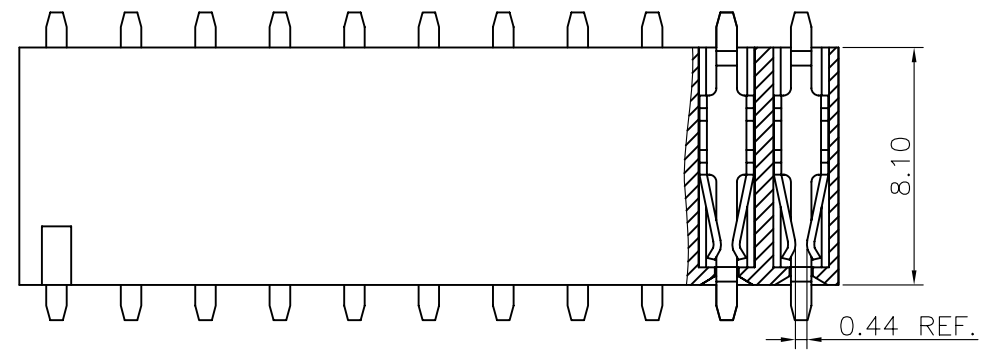
E

D

C

B

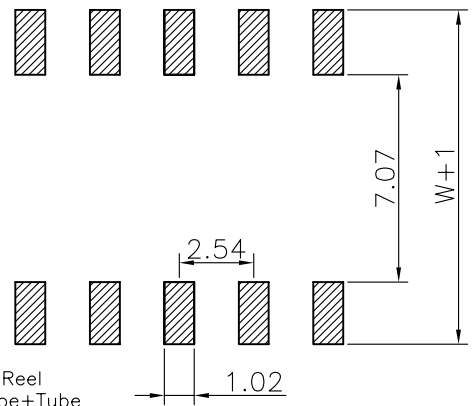
A



Specifications
 Current Rating:3.0Amp
 Insulation Resistance:1000MΩMin.
 Dielectric Withstanding Voltage:600VAC
 Contact Resistance:20mΩMax.
 Operating Temperature:-40°C to +105°C
 Materials
 Contact Material:
 Phosphor Bronze
 Insulator Material:
 Nylon(High temperature resistance),
 LCP(High temperature resistance),
 UL 94V-0
 All materials must meet Greenconn
 hazardous substances control standards.

| No. of PIN/ROW | Dimension Information | |
|----------------|-----------------------|--------|
| | M | L |
| 02 | 2.54 | 5.08 |
| 03 | 5.08 | 7.62 |
| 04 | 7.62 | 10.16 |
| 05 | 10.16 | 12.70 |
| 06 | 12.70 | 15.24 |
| 07 | 15.24 | 17.78 |
| 08 | 17.78 | 20.32 |
| 09 | 20.32 | 22.86 |
| 10 | 22.86 | 25.40 |
| 11 | 25.40 | 27.94 |
| 12 | 27.94 | 30.48 |
| 13 | 30.48 | 33.02 |
| 14 | 33.02 | 35.56 |
| 15 | 35.56 | 38.10 |
| 16 | 38.10 | 40.64 |
| 17 | 40.64 | 43.18 |
| 18 | 43.18 | 45.72 |
| 19 | 45.72 | 48.26 |
| 20 | 48.26 | 50.80 |
| 21 | 50.80 | 53.34 |
| 22 | 53.34 | 55.88 |
| 23 | 55.88 | 58.42 |
| 24 | 58.42 | 60.96 |
| 25 | 60.96 | 63.50 |
| 26 | 63.50 | 66.04 |
| 27 | 66.04 | 68.58 |
| 28 | 68.58 | 71.12 |
| 29 | 71.12 | 73.66 |
| 30 | 73.66 | 76.20 |
| 31 | 76.20 | 78.74 |
| 32 | 78.74 | 81.28 |
| 33 | 81.28 | 83.82 |
| 34 | 83.82 | 86.36 |
| 35 | 86.36 | 88.90 |
| 36 | 88.90 | 91.44 |
| 37 | 91.44 | 93.98 |
| 38 | 93.98 | 96.52 |
| 39 | 96.52 | 99.06 |
| 40 | 99.06 | 101.60 |

Recommended P.C.Board
 Layout
 (Tolerance:±0.05)



Ordering Information

XB-PM-C-254-110

- Plastic specifications: 1=Single row, 2=Dual row, 3=Tripe row, 4=Quadruple
- Water code
- No. of Pins per Row: 02~40
- Positioning column information: A=No locating post, B=Round post, C=Square post
- Plating code: 01=Tin, 02=Gold Flash, 05=Gold Flash/Tin, 22=Matte Tin
- Pin length: See the drawing
- Insulator Material: R=Nylon(Halogen Free), C=LCP
- Color: 1=Black, 2=White, 3=Yellow, E=Beige
- Contact Material: A/S/K/T=Phosphor Bronze
- Packing code: A=Box, B=Tray, C=Tube, D=Tape&Reel, E=Cap+Tube, F=Cap+Tape&Reel, G=Acetate Tape+Tube, H=Acetate Tape+Tape&Reel

东莞市溪榜电子有限公司
 DONG GUAN XI BANG ELECTRONICS CO., LTD.

| GENERAL TOLERANCE | |
|-------------------|-----------|
| X.*±5.0° | X.±0.30 |
| .X*±3.0° | .X±0.25 |
| .XX*±2.0° | .XX±0.15 |
| .XXX*±1.0° | .XXX±0.10 |

DWG. NO.
XB-PM-C-254-110
 PART NO.
XB-PM-C-254-110

TITLE.
**2.54 FEMALE HEADER
 SINGLE ROW SMT TYPE
 CONNECTOR**

| REV. | UNIT. | SCALE. | PAGE. |
|------|-------|--------|-------|
| 01 | mm | 4:1 | 1/1 |

1 2 3 4 5 6 7 8 9

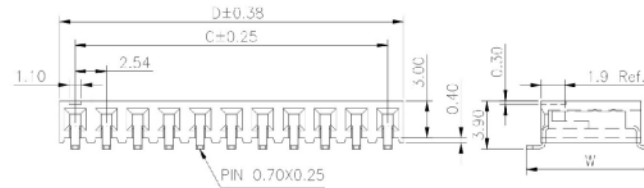
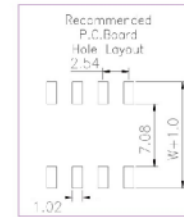
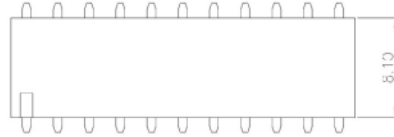
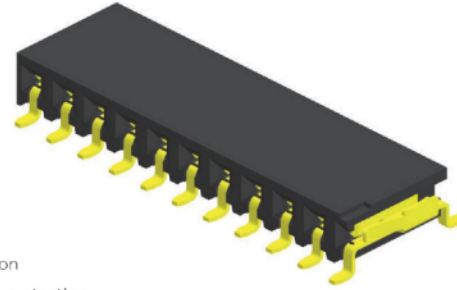
Specifications

Current Rating : 3.0 Ampere
 Insulation Resistance : 1000 MΩ Min
 Dielectric Withstanding : 600V AC
 Contact Resistance : 20 mΩ Max
 Operating Temperature : -40°C to +105°C

Materials

Contact Material : Phosphor Bronze
 Insulation Material : High Temperature Thermoplastic, 94V-0 Nylon

All materials must meet Greenconn's requirements for environmental protection.



P.S. : Suggested mating pin length : 3.5 ~ 7.5 mm

| No. of Pins/Row | Dimension Information | | | No. of Pins/Row | Dimension Information | | | No. of Pins/Row | Dimension Information | | | No. of Pins/Row | Dimension Information | | |
|-----------------|-----------------------|-------|--|-----------------|-----------------------|-------|--|-----------------|-----------------------|-------|--|-----------------|-----------------------|--------|--|
| | C | D | | | C | D | | | C | D | | | C | D | |
| 02 | 2.54 | 5.58 | | 11 | 25.40 | 28.44 | | 21 | 50.80 | 53.84 | | 31 | 76.20 | 79.24 | |
| 03 | 5.08 | 8.12 | | 12 | 27.94 | 30.98 | | 22 | 53.34 | 56.38 | | 32 | 78.74 | 81.78 | |
| 04 | 7.62 | 10.66 | | 13 | 30.48 | 33.52 | | 23 | 55.88 | 58.92 | | 33 | 81.28 | 84.32 | |
| 05 | 10.16 | 13.20 | | 14 | 33.02 | 36.06 | | 24 | 58.42 | 61.46 | | 34 | 83.82 | 86.86 | |
| 06 | 12.70 | 15.74 | | 15 | 35.56 | 38.60 | | 25 | 60.96 | 64.00 | | 35 | 86.36 | 89.40 | |
| 07 | 15.24 | 18.28 | | 16 | 38.10 | 41.14 | | 26 | 63.50 | 66.54 | | 36 | 88.90 | 91.94 | |
| 08 | 17.78 | 20.82 | | 17 | 40.64 | 43.68 | | 27 | 66.04 | 69.08 | | 37 | 91.44 | 94.48 | |
| 09 | 20.32 | 23.36 | | 18 | 43.18 | 46.22 | | 28 | 68.58 | 71.62 | | 38 | 93.98 | 97.02 | |
| 10 | 22.86 | 25.90 | | 19 | 45.72 | 48.76 | | 29 | 71.12 | 74.16 | | 39 | 96.52 | 99.56 | |
| | | | | 20 | 48.26 | 51.30 | | 30 | 73.66 | 76.70 | | 40 | 99.06 | 102.10 | |

XB 东莞市溪榜电子有限公司
 DONG GUAN XI BANG ELECTRONICS CO., LTD.

REV. 01 UNIT. mm SCALE. 5:1 PAGE. 1/1

| GENERAL TOLERANCE | |
|-------------------|-----------|
| X.±5.0' | X.±0.30 |
| .X'±3.0' | .X±0.25 |
| .XX'±2.0' | .XX±0.15 |
| .XXX'±1.0' | .XXX±0.10 |

| | |
|-----------|-------|
| DESIGN: | DATE: |
| CHECKED: | DATE: |
| AUDITED: | DATE: |
| APPROVED: | DATE: |

DWG. NO. XB-PM-C-254-110
 PART NO. XB-PM-C-254-110

TITLE. 2.00 FEMALE HEADER SINGLE ROW DIP TYPE BASE 4.30H