

1 2 3 4 5 6 7 8 9

F

E

D

C

B

A

F

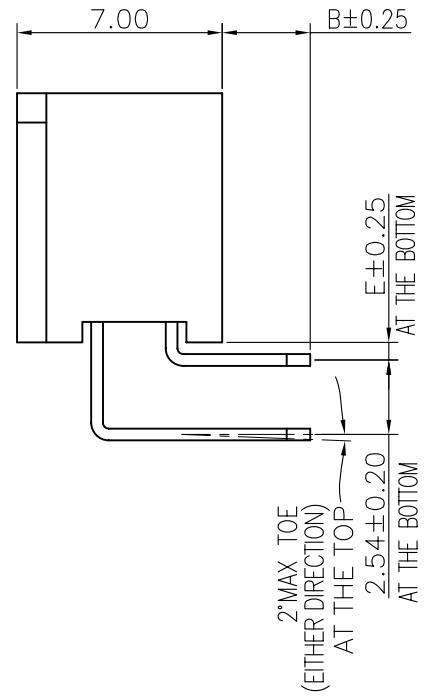
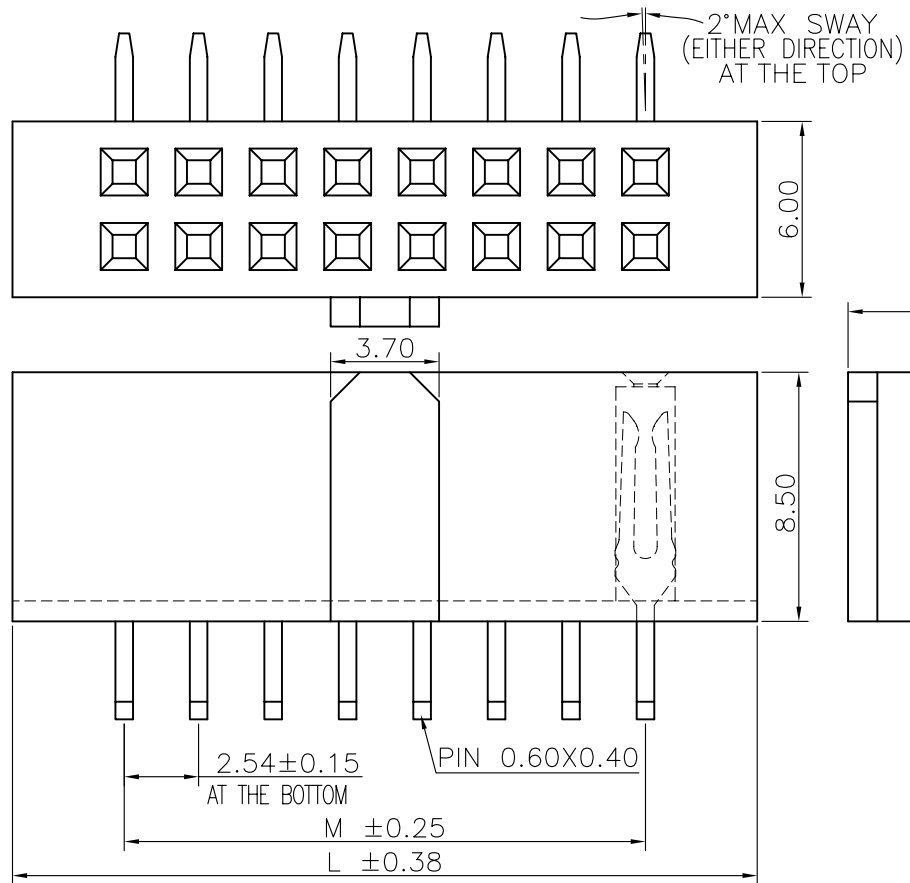
E

D

C

B

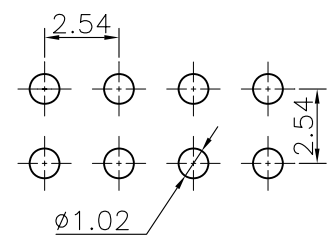
A



Specifications
 Current Rating:3.0Amp
 Insulation Resistance:1000MΩMin.
 Dielectric Withstanding Voltage:600VAC
 Contact Resistance:20mΩMax.
 Operating Temperature:-40°C to +105°C
 Materials
 Contact Material:
 Phosphor Bronze
 Insulator Material:
 PBT(Not resistant to high temperature),
 Nylon(High temperature resistance),
 LCP(High temperature resistance),
 UL 94V-0
 All materials must meet Greenconn
 hazardous substances control standards.

No. of PIN/ROW	Dimension Information	
	M	L
03	5.08	12.50
04	7.62	15.04
05	10.16	17.58
06	12.70	20.12
07	15.24	22.66
08	17.78	25.20
09	20.32	27.74
10	22.86	30.28
11	25.40	32.82
12	27.94	35.36
13	30.48	37.90
14	33.02	40.44
15	35.56	42.98
16	38.10	45.52
17	40.64	48.06
18	43.18	50.60
19	45.72	53.14
20	48.26	55.68
21	50.80	58.22
22	53.34	60.76
23	55.88	63.30
24	58.42	65.84
25	60.96	68.38
26	63.50	70.92
27	66.04	73.46
28	68.58	76.00
29	71.12	78.54
30	73.66	81.08
31	76.20	83.62
32	78.74	86.16
33	81.28	88.70
34	83.82	91.24
35	86.36	93.78
36	88.90	96.32

Recommended P.C.Board Layout
 (Tolerance:±0.05)



Ordering Information

XB-PM-B-254-217

- Plastic specifications
 - 1=Single row
 - 2=Dual row
 - 3=Tripe row
 - 4=Quadruple
- Water code
- No. of Pins per Row 03~36
- Positioning column information
 - A=No locating post
 - B=Round post
 - C=Square post
- Plating code
 - 01=Tin
 - 02=Gold Flash
 - 05=Gold Flash/Tin
 - 22=Matte Tin
- Pin length See the drawing
- Insulator Material
 - A=PBT
 - R=Nylon(Halogen Free)
 - C=LCP
- Color
 - 1=Black
 - 2=White
 - 3=Yellow
 - E=Beige
- Contact Material A/S/K/T=Phosphor Bronze
- Packing code
 - A=Box
 - B=Tray
 - C=Tube
 - D=Tape&Reel
 - E=Cap+Tube
 - F=Cap+Tape&Reel
 - G=Acetate Tape+Tube
 - H=Acetate Tape+Tape&Reel

东莞市溪榜电子有限公司
 DONG GUAN XI BANG ELECTRONICS CO., LTD.
 Switch Connector

REV. 01 UNIT. mm SCALE. 4:1 PAGE. 1/1

GENERAL TOLERANCE	
X.*±5.0°	X.±0.30
.X*±3.0°	.X±0.25
.XX*±2.0°	.XX±0.15
.XXX*±1.0°	.XXX±0.10

DWG. NO.
XB-PM-B-254-217

PART NO.
XB-PM-B-254-217

TITLE.
**2.54 FEMALE HEADER
 DUAL ROWS R/A TYPE
 CONNECTOR**

1 2 3 4 5 6 7 8 9

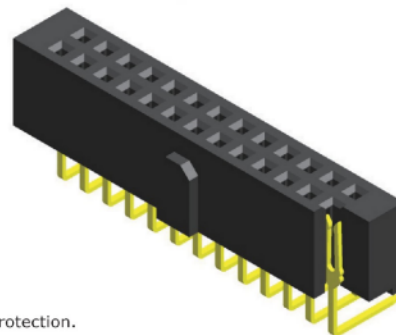
Specifications

Current Rating : 3.0 Ampere
 Insulation Resistance : 1000 MΩ Min
 Dielectric Withstanding : 600V AC
 Contact Resistance : 20 mΩ Max
 Operating Temperature : -40°C to +105°C

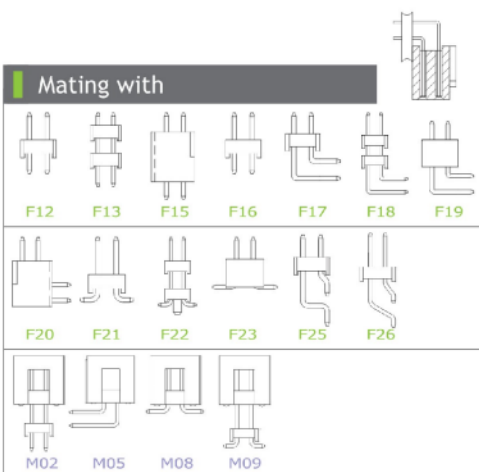
Materials

Contact Material : Phosphor Bronze
 Insulation Material : High Temperature Thermoplastic, 94V-0 PBT

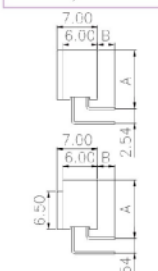
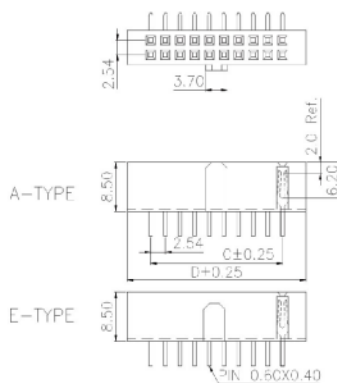
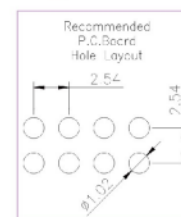
All materials must meet Greenconn's requirements for environmental protection.



Mating with



P.S. : Suggested mating pin length : 4.0 ~ 6.0 mm



* For Coded Dimension Not Inside The Table, Please Refer To "Ordering Information"

No. of Pins/Row	Dimension Information		No. of Pins/Row	Dimension Information		No. of Pins/Row	Dimension Information		No. of Pins/Row	Dimension Information	
	A	B		A	B		A	B		A	B
03	5.08	12.50	11	25.40	32.82	21	50.80	58.22	31	76.20	83.62
04	7.62	15.04	12	27.94	35.36	22	53.34	60.76	32	78.74	86.16
05	10.16	17.58	13	30.48	37.90	23	55.88	63.30	33	81.28	88.70
06	12.70	20.12	14	33.02	40.44	24	58.42	65.84	34	83.82	91.24
07	15.24	22.66	15	35.56	42.98	25	60.96	68.38	35	86.36	93.78
08	17.78	25.20	16	38.10	45.52	26	63.50	70.92	36	88.90	96.32
09	20.32	27.74	17	40.64	48.06	27	66.04	73.46			
10	22.86	30.28	18	43.18	50.60	28	68.58	76.00			
			19	45.72	53.14	29	71.12	78.54			
			20	48.26	55.68	30	73.66	81.08			

XB 东莞市溪榜电子有限公司
 DONG GUAN XI BANG ELECTRONICS CO., LTD.

REV. 01 UNIT. mm SCALE. 5:1 PAGE. 1/1

GENERAL TOLERANCE	
X.*±5.0'	X.±0.30
.X'±3.0'	.X±0.25
.XX'±2.0'	.XX±0.15
.XXX'±1.0'	.XXX±0.10

DESIGN:	DATE:
CHECKED:	DATE:
AUDITED:	DATE:
APPROVED:	DATE:

DWG. NO. XB-PM-B-254-217
 PART NO. XB-PM-B-254-217

TITLE. 2.00 FEMALE HEADER SINGLE ROW DIP TYPE BASE 4.30H