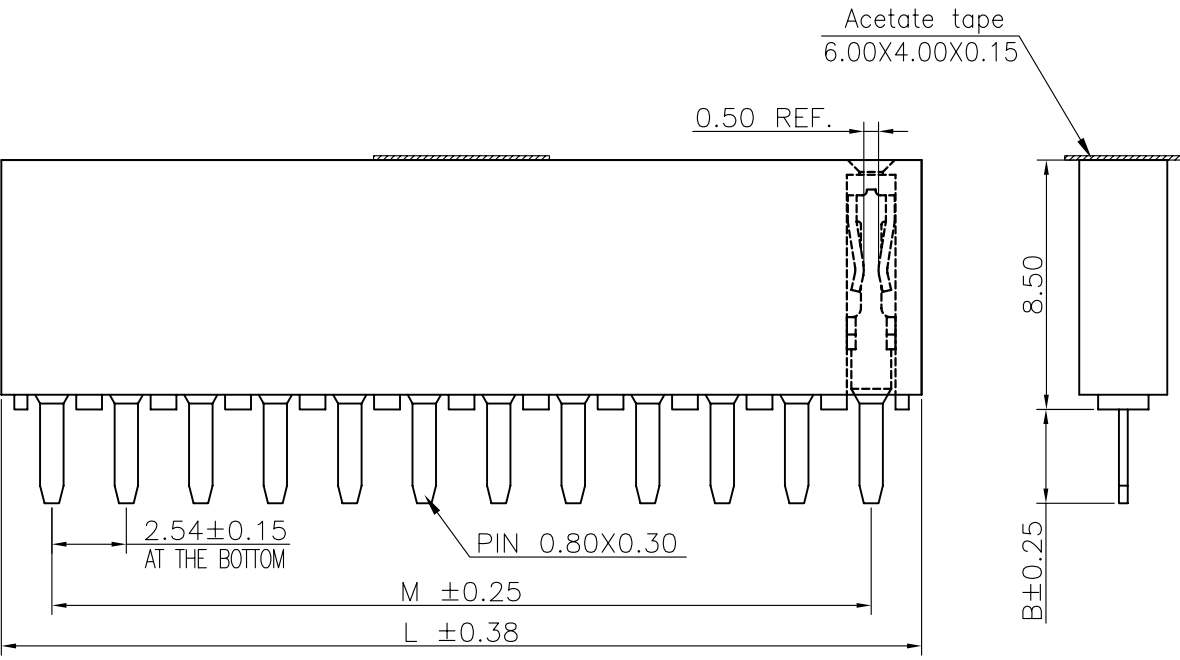
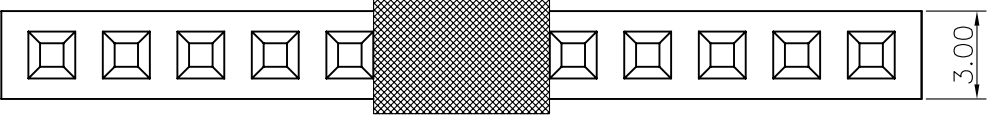


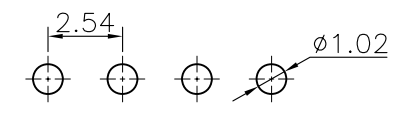
F  
E  
D  
C  
B  
A



Specifications  
 Current Rating:3.0Amp  
 Insulation Resistance:1000MΩMin.  
 Dielectric Withstanding Voltage:600VAC  
 Contact Resistance:20mΩMax.  
 Operating Temperature:-40°C to +105°C  
 Materials  
 Contact Material:  
 Phosphor Bronze  
 Insulator Material:  
 PBT(Not resistant to high temperature),  
 Nylon(High temperature resistance),  
 LCP(High temperature resistance),  
 UL 94V-0  
 All materials must meet Greenconn  
 hazardous substances control standards.

No. of PIN/ROW	Dimension Information	
	M	L
02	2.54	5.88
03	5.08	8.42
04	7.62	10.96
05	10.16	13.50
06	12.70	16.04
07	15.24	18.58
08	17.78	21.12
09	20.32	23.66
10	22.86	26.20
11	25.40	28.74
12	27.94	31.28
13	30.48	33.82
14	33.02	36.36
15	35.56	38.90
16	38.10	41.44
17	40.64	43.98
18	43.18	46.52
19	45.72	49.06
20	48.26	51.60
21	50.80	54.14
22	53.34	56.68
23	55.88	59.22
24	58.42	61.76
25	60.96	64.30
26	63.50	66.84
27	66.04	69.38
28	68.58	71.92
29	71.12	74.46
30	73.66	77.00
31	76.20	79.54
32	78.74	82.08
33	81.28	84.62
34	83.82	87.16
35	86.36	89.70
36	88.90	92.24
37	91.44	94.78
38	93.98	97.32
39	96.52	99.86
40	99.06	102.40

Recommended P.C.Board  
 Layout  
 (Tolerance:±0.05)



### Ordering Information

**XB-PM-A-254-108**

- Plastic specifications  
 1=Single row  
 2=Dual row  
 3=Tripe row  
 4=Quadruple
- Water code
- No. of Pins per Row  
 02~40
- Positioning column information  
 A=No locating post  
 B=Round post  
 C=Square post
- Pin length  
 See the drawing
- Color  
 1=Black  
 2=White  
 3=Yellow  
 E=Beige
- Packing code  
 A=Box  
 B=Tray  
 C=Tube  
 D=Tape&Reel  
 E=Cap+Tube  
 F=Cap+Tape&Reel  
 G=Acetate Tape+Tube  
 H=Acetate Tape+Tape&Reel
- Plating code  
 01=Tin  
 02=Gold Flash  
 05=Gold Flash/Tin  
 22=Matte Tin
- Insulator Material  
 A=PBT  
 R=Nylon(Halogen Free)  
 C=LCP
- Contact Material  
 A/S/K/T=Phosphor Bronze

**XB** 东莞市溪榜电子有限公司  
 DONG GUAN XI BANG ELECTRONICS CO., LTD.  
 Switch Connector

GENERAL TOLERANCE	
X.*±5.0°	X.±0.30
.X*±3.0°	.X±0.25
.XX*±2.0°	.XX±0.15
.XXX*±1.0°	.XXX±0.10

DWG. NO.  
**XB-PM-A-254-108**  
 PART NO.  
**XB-PM-A-254-108**

TITLE.  
 2.54 FEMALE HEADER  
 SINGLE ROW DIP TYPE  
 CONNECTOR

REV.	UNIT.	SCALE.	PAGE.
01	mm	4:1	1/1

1 2 3 4 5 6 7 8 9

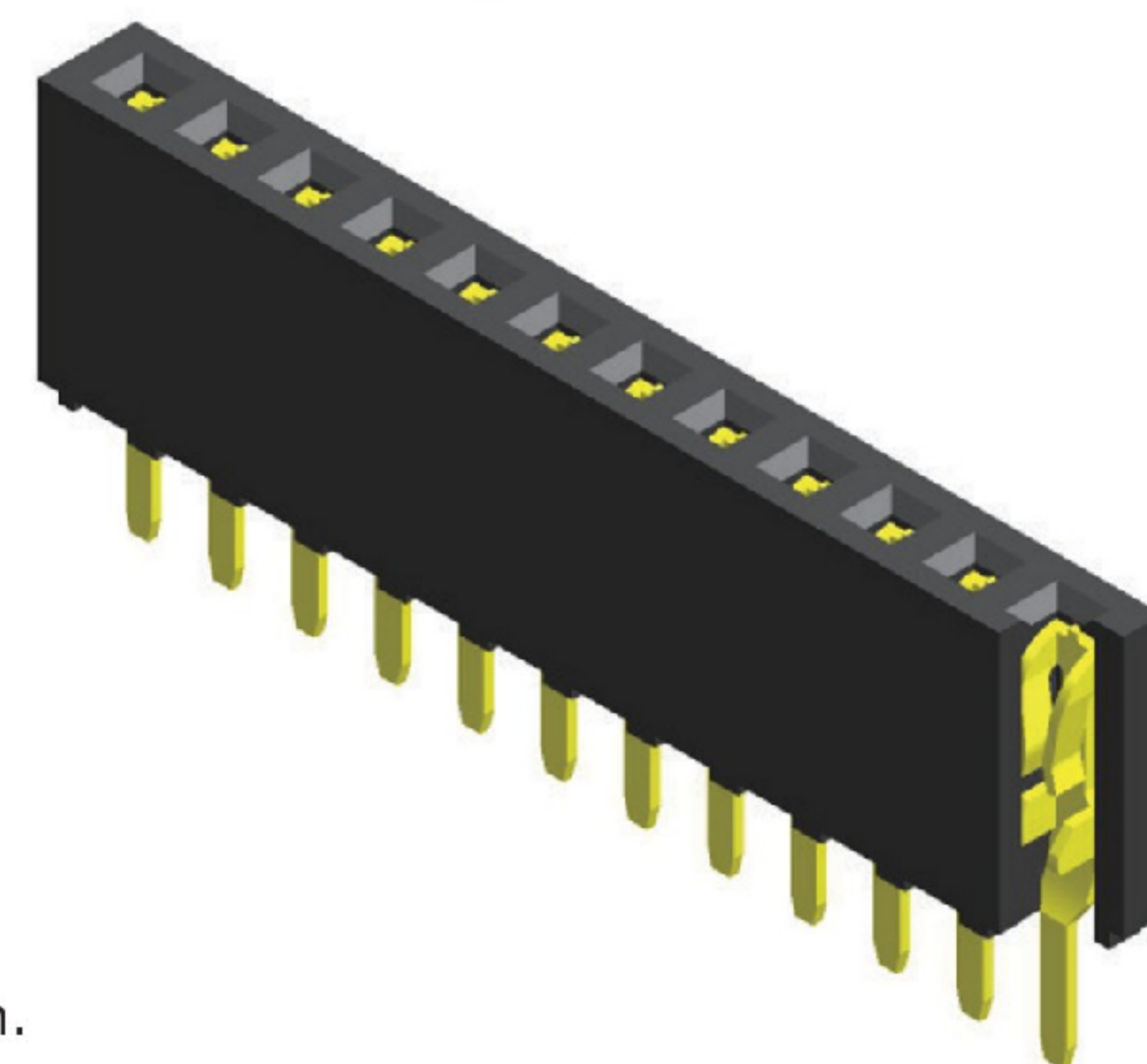
### Specifications

Current Rating : 3.0 Ampere  
 Insulation Resistance : 1000 MΩ Min  
 Dielectric Withstanding : 600V AC  
 Contact Resistance : 20 mΩ Max  
 Operating Temperature : -40°C to +105°C

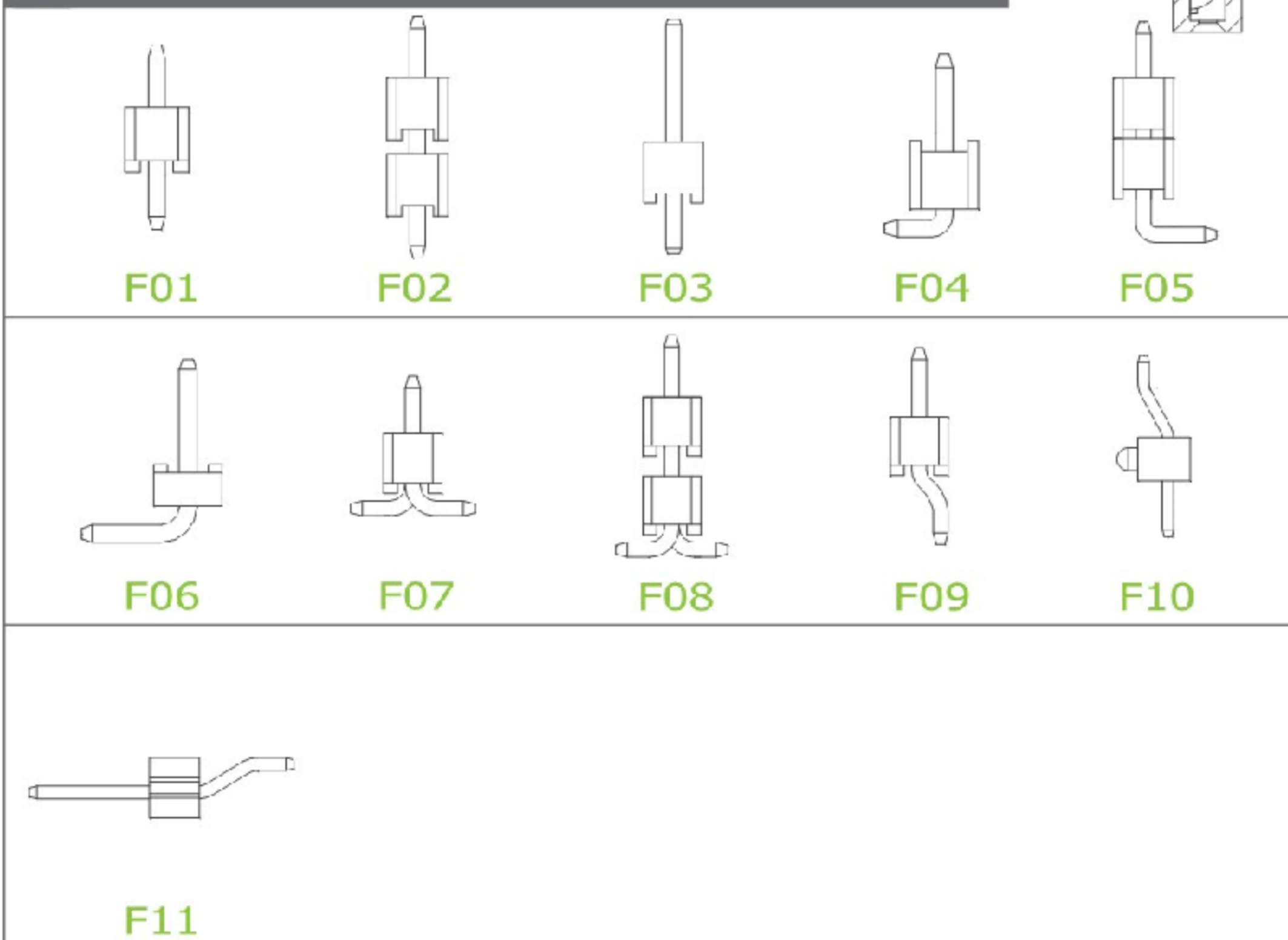
### Materials

Contact Material : Phosphor Bronze  
 Insulation Material : High Temperature Thermoplastic, 94V-0 PBT

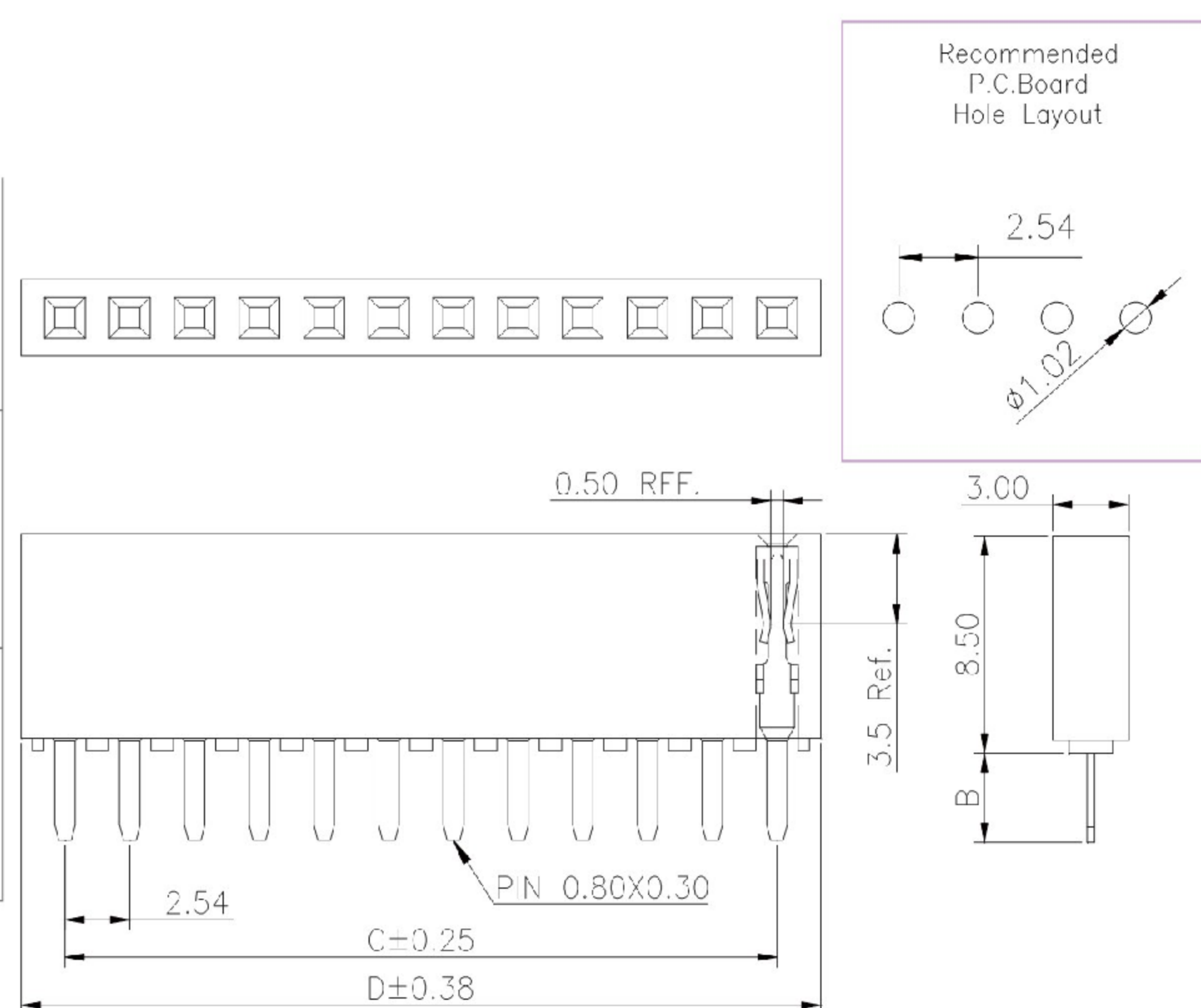
All materials must meet Greenconn's requirements for environmental protection.



### Mating with



P.S. : Suggested mating pin length : 5.0 ~ 8.0 mm



\* For Coded Dimension Not Inside The Table, Please Refer To "Ordering Information"

No. of Pins/Row	Dimension Information		No. of Pins/Row	Dimension Information		No. of Pins/Row	Dimension Information		No. of Pins/Row	Dimension Information	
	C	D		C	D		C	D		C	D
02	2.54	5.88	11	25.40	28.74	21	50.80	54.14	31	76.20	79.54
03	5.08	8.42	12	27.94	31.28	22	53.34	56.68	32	78.74	82.08
04	7.62	10.96	13	30.48	33.82	23	55.88	59.22	33	81.28	84.62
05	10.16	13.50	14	33.02	36.36	24	58.42	61.76	34	83.82	87.16
06	12.70	16.04	15	35.56	38.90	25	60.96	64.30	35	86.36	89.70
07	15.24	18.58	16	38.10	41.44	26	63.50	66.84	36	88.90	92.24
08	17.78	21.12	17	40.64	43.98	27	66.04	69.38	37	91.44	94.78
09	20.32	23.66	18	43.18	46.52	28	68.58	71.92	38	93.98	97.32
10	22.86	26.20	19	45.72	49.06	29	71.12	74.46	39	96.52	99.86
			20	48.26	51.60	30	73.66	77.00	40	99.06	102.40

**东莞市溪榜电子有限公司**  
 DONG GUAN XI BANG ELECTRONICS CO., LTD.

REV. 01 UNIT. mm SCALE. 5:1 PAGE. 1/1

GENERAL TOLERANCE	
X'±5.0'	X.±0.30
.X'±3.0'	.X±0.25
.XX'±2.0'	.XX±0.15
.XXX'±1.0'	.XXX±0.10

DESIGN: \_\_\_\_\_ DATE: \_\_\_\_\_  
 CHECKED: \_\_\_\_\_ DATE: \_\_\_\_\_  
 AUDITED: \_\_\_\_\_ DATE: \_\_\_\_\_  
 APPROVED: \_\_\_\_\_ DATE: \_\_\_\_\_

DWG. NO. XB-PM-A-254-108  
 PART NO. XB-PM-A-254-108

TITLE. 2.00 FEMALE HEADER SINGLE ROW DIP TYPE BASE 4.30H