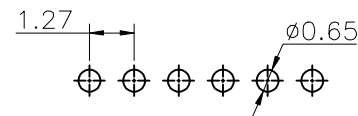


Specifications
 Current Rating:1Amp
 Insulation Resistance:1000MΩMin.
 Dielectric Withstanding Voltage:300VAC
 Contact Resistance:20mΩMax.
 Operating Temperature:-40°C to +105°C
 Materials
 Contact Material:Phosphor Bronze
 Insulator Material:High Temperature Thermoplastic, UL 94V-0 LCP or the equivalent material
 All materials must meet Greenconn requirement for environment protection.

Recommended P.C.Board Layout
 (Tolerance:±0.05)



| No. of PIN/ROW | Dimension Information | |
|----------------|-----------------------|-------|
| | M | L |
| 02 | 1.27 | 2.54 |
| 03 | 2.54 | 3.81 |
| 04 | 3.81 | 5.08 |
| 05 | 5.08 | 6.35 |
| 06 | 6.35 | 7.62 |
| 07 | 7.62 | 8.89 |
| 08 | 8.89 | 10.16 |
| 09 | 10.16 | 11.43 |
| 10 | 11.43 | 12.70 |
| 11 | 12.70 | 13.97 |
| 12 | 13.97 | 15.24 |
| 13 | 15.24 | 16.51 |
| 14 | 16.51 | 17.78 |
| 15 | 17.78 | 19.05 |
| 16 | 19.05 | 20.32 |
| 17 | 20.32 | 21.59 |
| 18 | 21.59 | 22.86 |
| 19 | 22.86 | 24.13 |
| 20 | 24.13 | 25.40 |
| 21 | 25.40 | 26.67 |
| 22 | 26.67 | 27.94 |
| 23 | 27.94 | 29.21 |
| 24 | 29.21 | 30.48 |
| 25 | 30.48 | 31.75 |
| 26 | 31.75 | 33.02 |
| 27 | 33.02 | 34.29 |
| 28 | 34.29 | 35.56 |
| 29 | 35.56 | 36.83 |
| 30 | 36.83 | 38.10 |
| 31 | 38.10 | 39.37 |
| 32 | 39.37 | 40.64 |
| 33 | 40.64 | 41.91 |
| 34 | 41.91 | 43.18 |
| 35 | 43.18 | 44.45 |

Ordering Information

XB-PM-A-127-113

| | | | | | |
|------------------------------------------------------------------------------------|------------------------------------------------------------------------------|---------------------------------------------------------------------------------------|---------------------------------------------|----------------------------------------------------|------------------------------------------------------------------------------------------------------------------------------------|
| Plastic specifications 1=Single row 2=Dual row 3=Tripe row 4=Quadruple | Water code No. of Pins per Row 02~35 | Positioning column information A=No locating post B=Round post C=Square post | Pin length See the drawing | Color 1=Black 2=White 3=Yellow E=Beige | Packing code A=Box C=Tube D=Tape&Reel E=Cap+Tube F=Cap+Tape&Reel G=Acetate Tape+Tube H=Acetate Tape+Tape&Reel |
| | Plating code 01=Tin 02=Gold Flash 05=Gold Flash/Tin 22=Matte Tin | Insulator Material C=LCP | Contact Material A/S/K/T=Phosphor Bronze | | |

东莞市溪榜电子有限公司
 DONG GUAN XI BANG ELECTRONICS CO., LTD.

REV. 01 UNIT. mm SCALE. 5:1 PAGE. 1/1

| GENERAL TOLERANCE | |
|-------------------|-----------|
| X'±5.0' | X.±0.30 |
| .X'±3.0' | .X±0.25 |
| .XX'±2.0' | .XX±0.15 |
| .XXX'±1.0' | .XXX±0.10 |

| | |
|-----------|-------|
| DESIGN: | DATE: |
| CHECKED: | DATE: |
| AUDITED: | DATE: |
| APPROVED: | DATE: |

DWG. NO.
XB-PM-A-127-113
 PART NO.
XB-PM-A-127-113

TITLE:
 1.27 FEMALE HEADER
 SINGLE ROW DIP TYPE

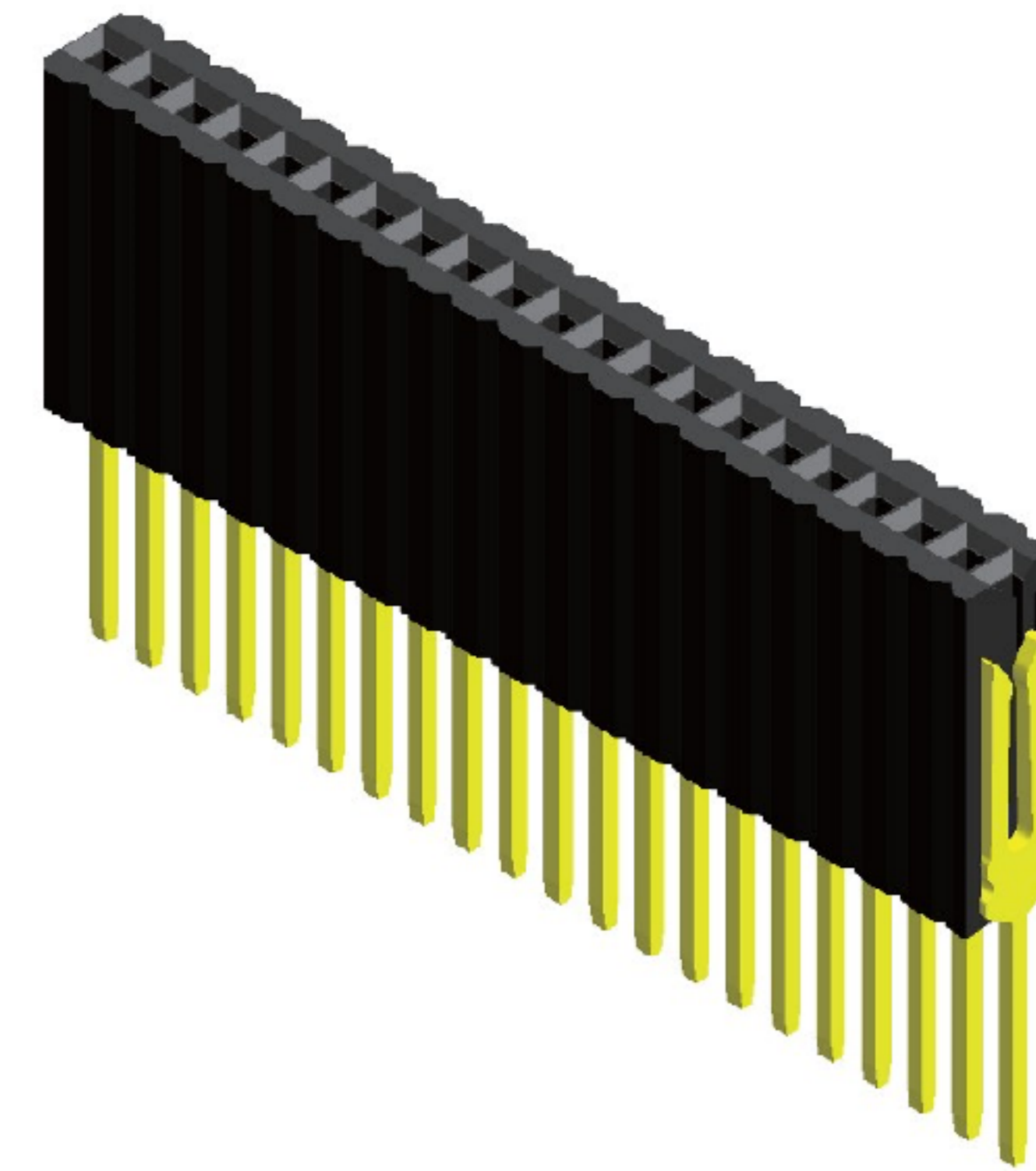
Specifications

Current Rating : 1.0 Ampere
 Insulation Resistance : 1000 MΩ Min
 Dielectric Withstanding : 300V AC
 Contact Resistance : 20 mΩ Max
 Operating Temperature : -40°C to +105°C

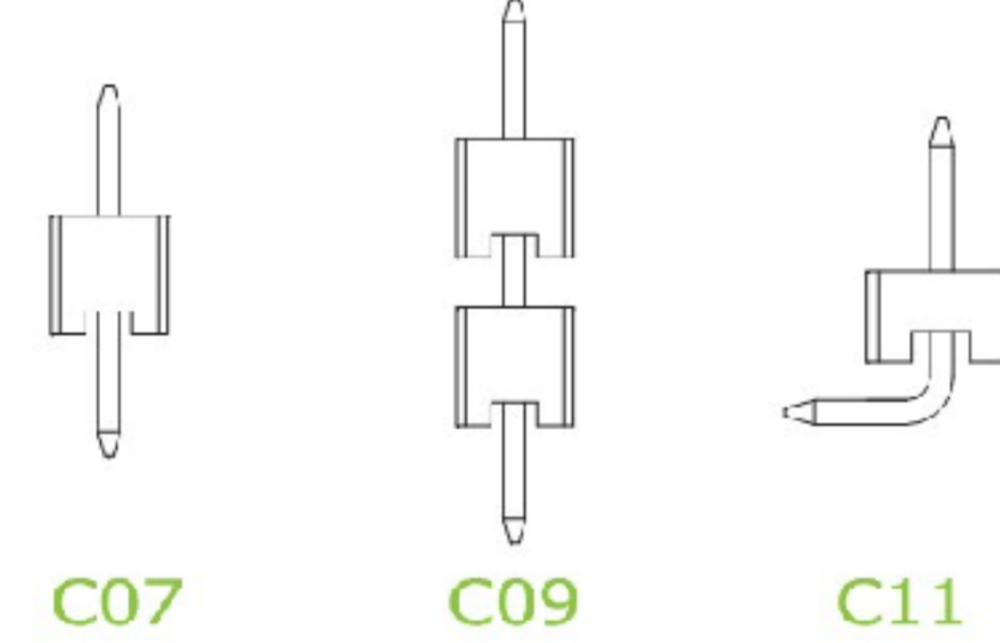
Materials

Contact Material : Phosphor Bronze
 Insulation Material : High Temperature Thermoplastic, 94V-0 LCP

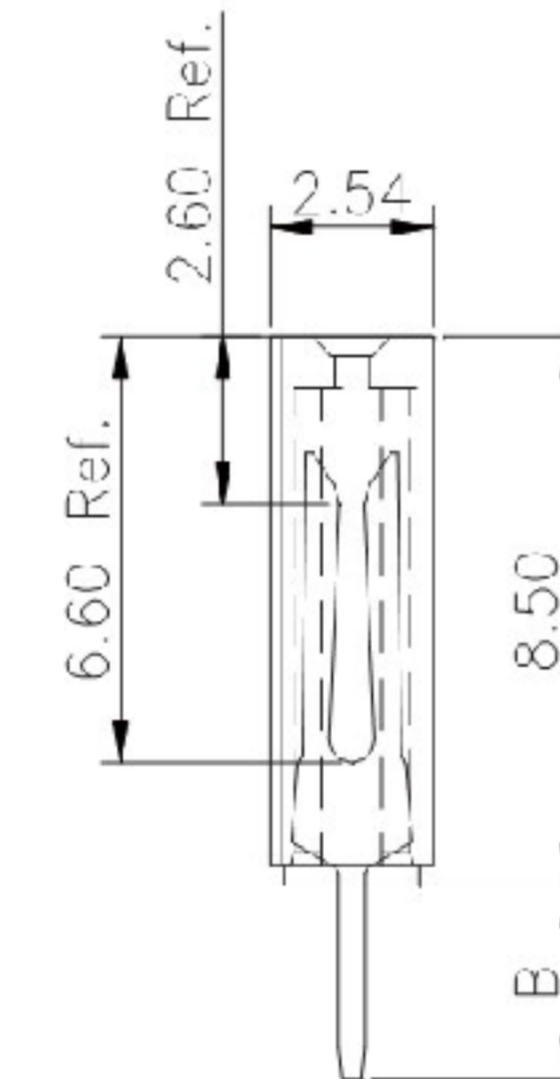
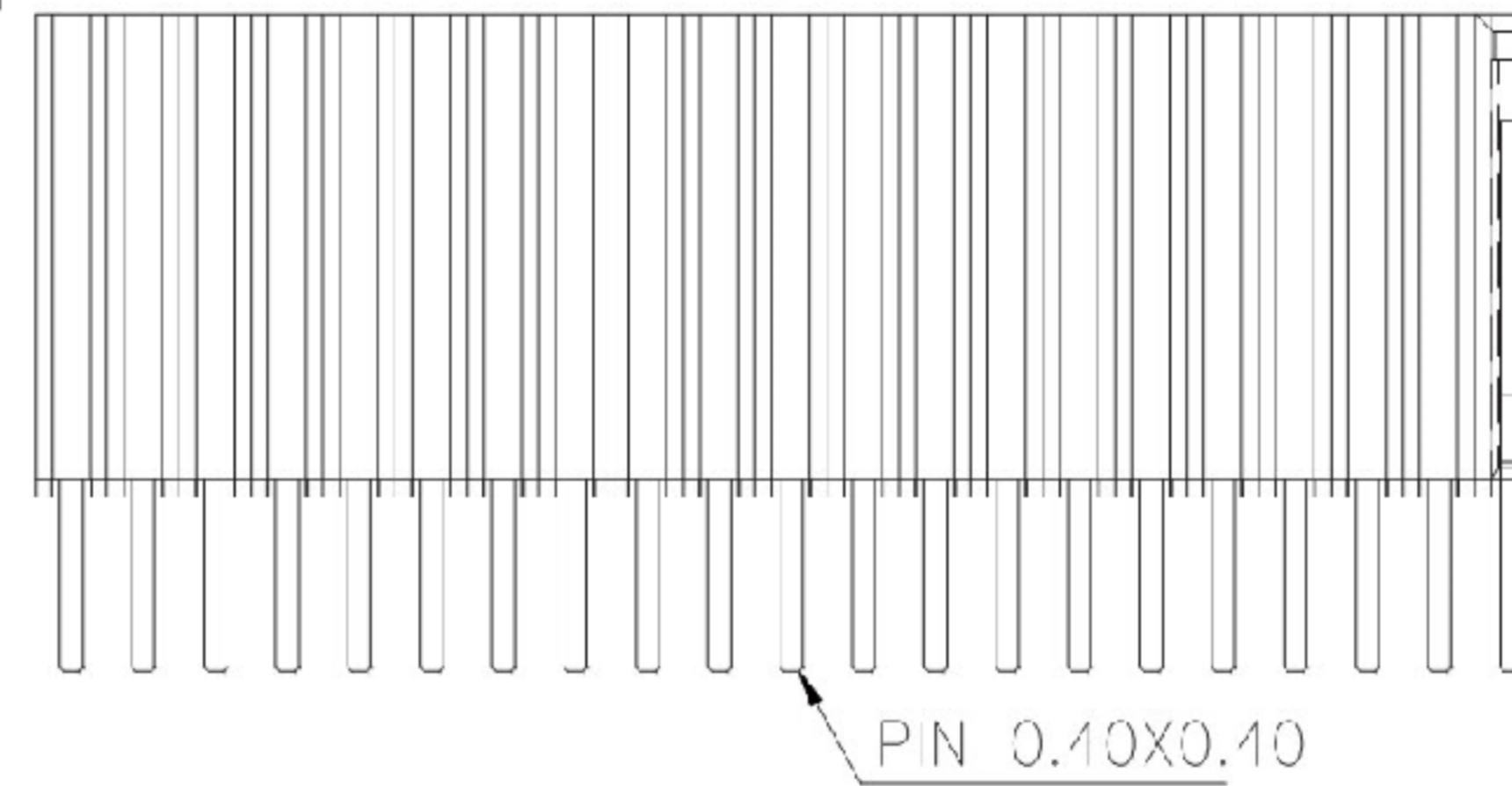
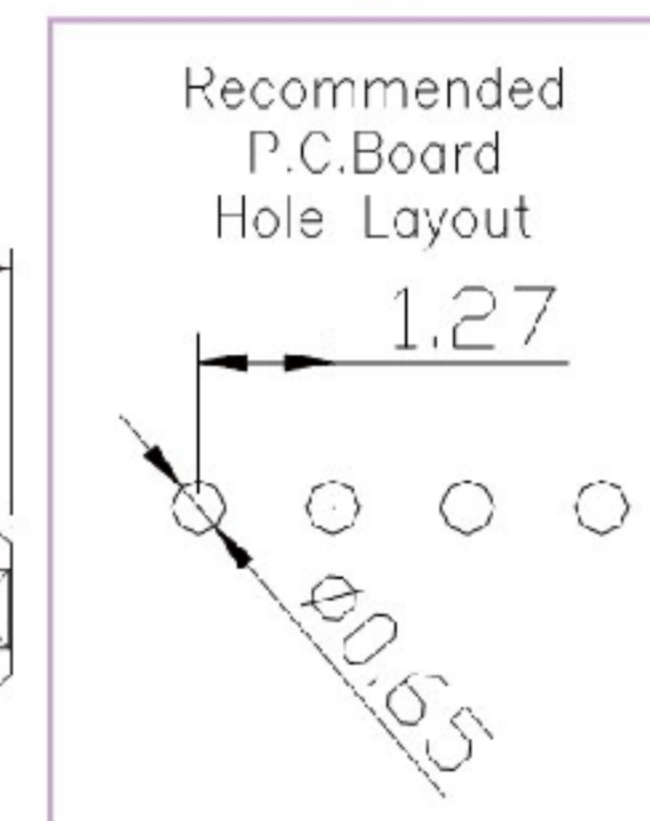
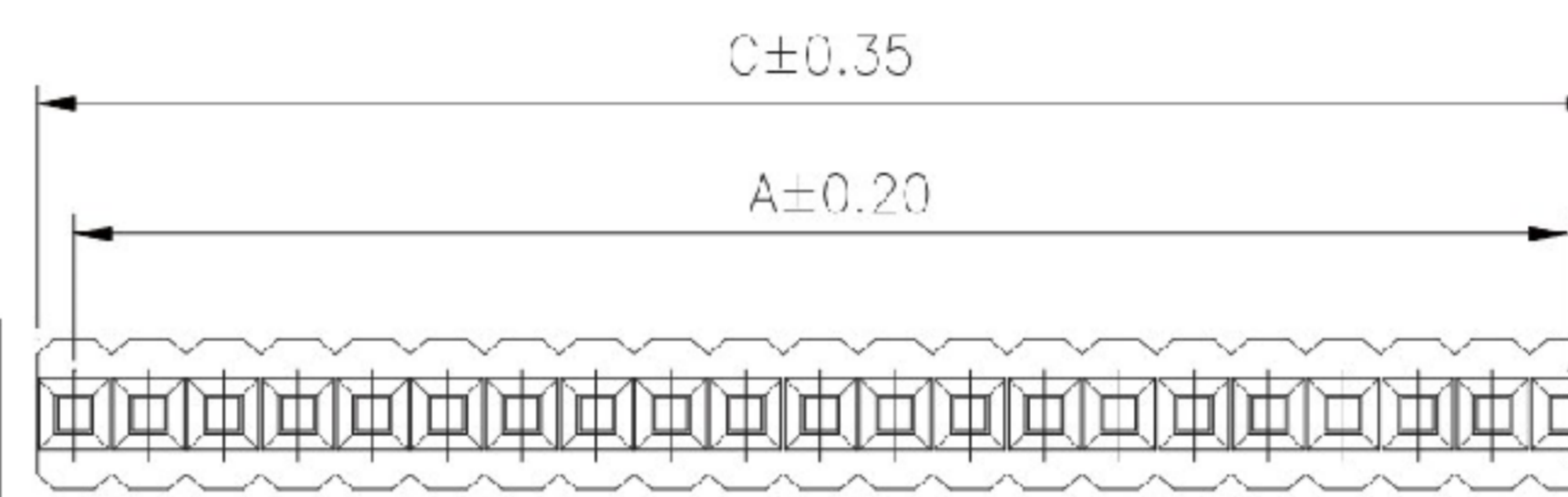
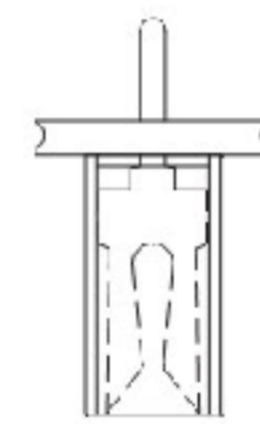
All materials must meet Greenconn's requirements for environmental protection.



Mating with



P.S. : Suggested mating pin length : 3.5 ~ 6.4 mm



* For Coded Dimension Not Inside The Table, Please Refer To "Ordering Information"

| No. of Pins/Row | Dimension Information | | No. of Pins/Row | Dimension Information | | No. of Pins/Row | Dimension Information | | No. of Pins/Row | Dimension Information | |
|-----------------|-----------------------|-------|-----------------|-----------------------|-------|-----------------|-----------------------|-------|-----------------|-----------------------|-------|
| | A | C | | A | C | | A | C | | A | C |
| 02 | 1.27 | 2.54 | 11 | 12.70 | 13.97 | 21 | 25.40 | 26.67 | 31 | 38.10 | 39.37 |
| 03 | 2.54 | 3.81 | 12 | 13.97 | 15.24 | 22 | 26.67 | 27.94 | 32 | 39.37 | 40.64 |
| 04 | 3.81 | 5.08 | 13 | 15.24 | 16.51 | 23 | 27.94 | 29.21 | 33 | 40.64 | 41.91 |
| 05 | 5.08 | 6.35 | 14 | 16.51 | 17.78 | 24 | 29.21 | 30.48 | 34 | 41.91 | 43.18 |
| 06 | 6.35 | 7.62 | 15 | 17.78 | 19.05 | 25 | 30.48 | 31.75 | 35 | 43.18 | 44.45 |
| 07 | 7.62 | 8.89 | 16 | 19.05 | 20.32 | 26 | 31.75 | 33.02 | | | |
| 08 | 8.89 | 10.16 | 17 | 20.32 | 21.59 | 27 | 33.02 | 34.29 | | | |
| 09 | 10.16 | 11.43 | 18 | 21.59 | 22.86 | 28 | 34.29 | 35.56 | | | |
| 10 | 11.43 | 12.70 | 19 | 22.86 | 24.13 | 29 | 35.56 | 36.83 | | | |
| | | | 20 | 24.13 | 25.40 | 30 | 36.83 | 38.10 | | | |

东莞市溪榜电子有限公司
 DONG GUAN XI BANG ELECTRONICS CO., LTD.

| GENERAL TOLERANCE | |
|-------------------|-------------|
| X' ± 5.0' | X ± 0.30 |
| .X' ± 3.0' | .X ± 0.25 |
| .XX' ± 2.0' | .XX ± 0.15 |
| .XXX' ± 1.0' | .XXX ± 0.10 |

| | |
|-----------|-------|
| DESIGN: | DATE: |
| CHECKED: | DATE: |
| AUDITED: | DATE: |
| APPROVED: | DATE: |

| | |
|----------|-----------------|
| DWG. NO. | XB-PM-A-127-113 |
| PART NO. | XB-PM-A-127-113 |

TITLE:
 2.00 FEMALE HEADER
 SINGLE ROW DIP TYPE
 BASE 4.30H

| | | | | |
|---------|----------|------------|-----------|--|
| REV. 01 | UNIT. mm | SCALE. 5:1 | PAGE. 1/1 | |
|---------|----------|------------|-----------|--|