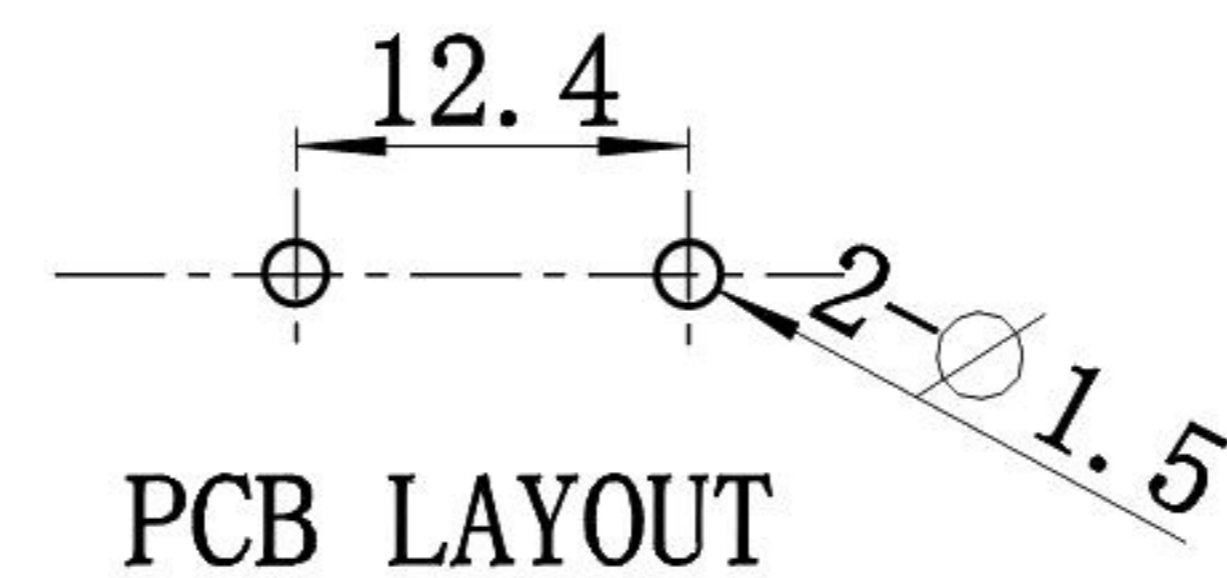


PANEL CUT-OUT



PCB LAYOUT

Rating:

7A 125V AC UL cUL

2.5A 250V AC VDE 3C

Insert And Extract Force: 1.36kgf~6.8kgf

Terminal Strength: ≥60N

Operating Life: ≥6000 cycles

Withstand Voltage: Between all terminals:2500VAC(50-60Hz)1min

Terminals to Base:3750V AC(50-60Hz)1min

Leakage Current:1mA

Insulation Resistance:≥100MΩ 500V DC

Body Materil: NYLON 66 94V-2~0

| 序号 | 名称 | 材料 | 处理 | 数量 | 备注 |
|----|-------------|------|----|----|----|
| 1 | DB-8-7J塑料件 | PA66 | 黑色 | 1 | |
| 2 | DB-8-1DX短插销 | 黄铜 | 镀镍 | 2 | |
| 3 | DB-8-P6端子 | 黄铜 | 镀锡 | 2 | |

普通公差:

COMMON TOLERANCE :

| | |
|---------------|-------|
| UP TO 5 | ±0.20 |
| ABOVE 5 TO 30 | ±0.30 |
| ABOVE 30 | ±0.50 |
| ANGULAR | ±5° |



东莞市溪榜电子有限公司

DONG GUAN XI BANG ELECTRONI CS CO., LTD.

| REV. | DATE | REVISION DESCRIPTION | ISSUE | 单位 | mm | 投影 | 品名 | Ac Inlet C8型 | 比例 | Free |
|------|------|----------------------|-------|----------|-----------|-------------|--------------|--------------|-------|-----------|
| | | | | UNIT | | PROJECTED | PRODUCT NAME | | SCALE | |
| | | | | 绘图 | 金泽木 | 核对 | 型号 | | | DB-8 |
| | | | | DRAWN BY | | CHECKED BY | MODEL NO. | | | |
| | | | | 日期 | 2023/2/15 | 核准 | 料号 | | | DB-8-7JP6 |
| | | | | DATE | | APPROVAL BY | PART NO. | | | |