

F

E

D

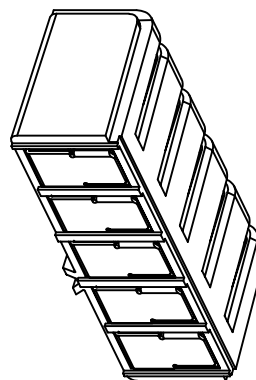
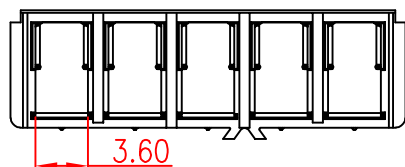
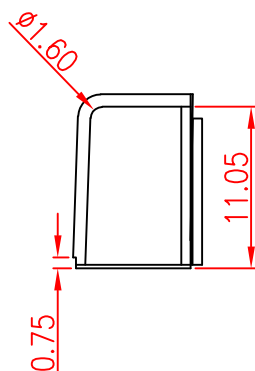
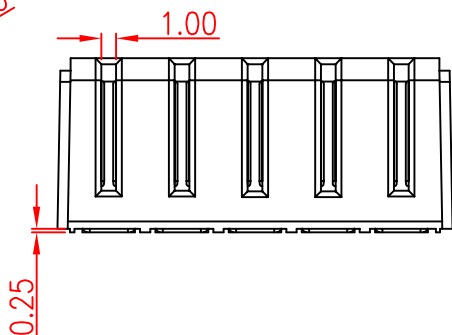
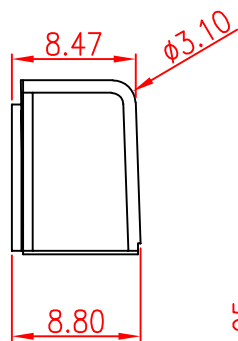
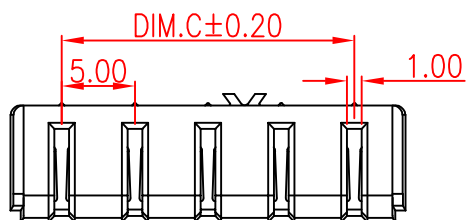
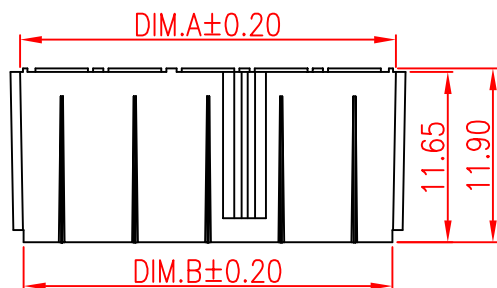
C

B

A

RoHS  
Compliant

SYMBOL	REVISION	APPROVAL	DATE



备注:

1. 产品规格:

1-1. 额定电压:30V

1-2. 耐电压:1000V AC MIN.

1-3. 接触阻抗:30mΩ MAX. INITIAL;40mΩ MAX  
AFTER 3000 CYCLES

1-4. 绝缘电阻:1000MΩ MIN

1-5. 工作温度:-25°C TO +80°C

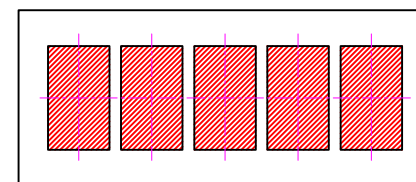
2. 材质:

2.1胶芯: PA9T UL94V-0/LCP BLACK

2.2端子: 合金铜, 镍底, GOLD

3. 所用材质须符合RoHS要求

PART NUMBER	PIN	Dim.A	Dim.B	Dim.C
XB-Z01F-2Pin	02pin	10.70	10.20	5.00
XB-Z01F-3Pin	03pin	15.70	15.20	10.00
XB-Z01F-4Pin	04pin	20.70	20.20	15.00
XB-Z01F-5Pin	05pin	25.70	25.20	20.00



RECOMMENDED P.C. BOARD LAYOUT

**XG** 东莞市溪榜电子有限公司  
DONG GUAN XI BANG ELECTRONICS CO., LTD.

COPYRIGHT RESERVED, PLEASE DO NOT COPY.

PART NAME		CONNECTOR		DRAWING	M.M.Zhang	DWG.No.	JD-009
PART NO.		XB-Z01S-SMD 系列		CHECK	G.C.Chen	REV.	A1
UNIT : mm	TOLERANCE	UP TO 5	±0.2	APPROVAL	SCALE	DATE	01-07-2016
	OTHERWISE	ABOVE 5 ~30	±0.3			PAGE	1 OF 1
		ANGLE	0°±3'				

F

E

D

C

B

A