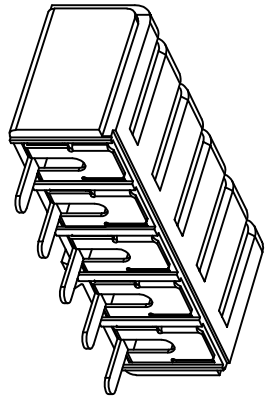
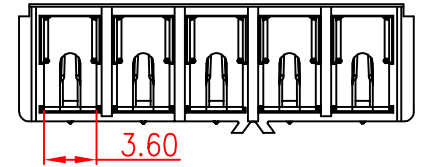
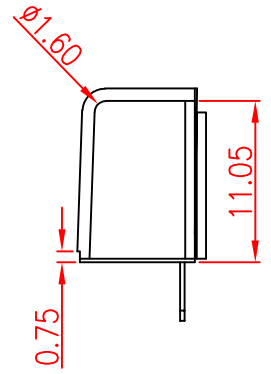
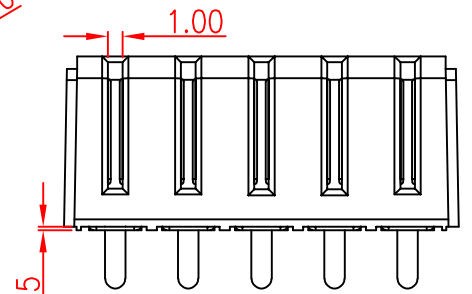
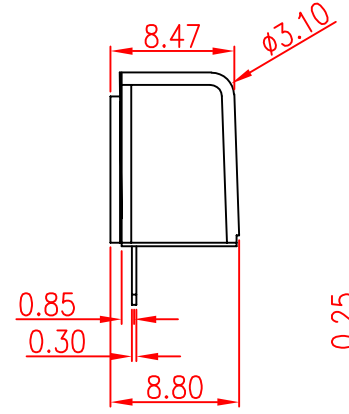
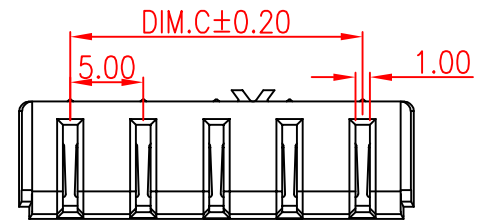
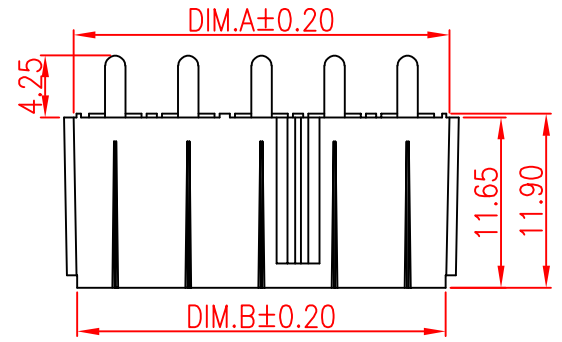


RoHS
Compliant

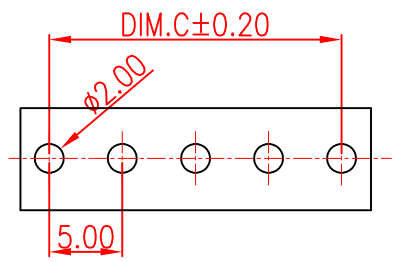
SYMBOL	REVISION	APPROVAL	DATE



备注:

- 产品规格:
 - 1-1. 额定电压:30V
 - 1-2. 耐电压:1000V AC MIN.
 - 1-3. 接触阻抗:30mΩ MAX. INITIAL;40mΩ MAX AFTER 3000 CYCLES
 - 1-4. 绝缘电阻:1000MΩ MIN
 - 1-5. 工作温度:-25°C TO +80°C
- 材质:
 - 2.1胶芯: PA9T UL94V-0/LCP BLACK
 - 2.2端子: 合金铜, 镍底, GOLD
- 所用材质须符合RoHS要求

PART NUMBER	PIN	Dim.A	Dim.B	Dim.C
XB-Z01F-2Pin	02pin	10.70	10.20	5.00
XB-Z01F-3Pin	03pin	15.70	15.20	10.00
XB-Z01F-4Pin	04pin	20.70	20.20	15.00
XB-Z01F-5Pin	05pin	25.70	25.20	20.00



RECOMMENDED P.C. BOARD LAYOUT

XGB 东莞市溪榜电子有限公司
DONG GUAN XI BANG ELECTRONICS CO., LTD.

COPYRIGHT RESERVED, PLEASE DO NOT COPY.

PART NAME		CONNECTOR		DRAWING	M.M.Zhang	DWG.No.	JD-009
PART NO.		XB-Z01S-DIP 系列		CHECK	G.C.Chen	REV.	A1
UNIT : mm	TOLERANCE	UP TO 5	±0.2	ANGLE	APPROVAL	DATE	01-07-2016
	OTHERWISE	ABOVE 5~30	±0.3			SCALE	2:1