

RoHS
Compliant

SYMBOL	REVISION	APPROVAL	DATE

备注:

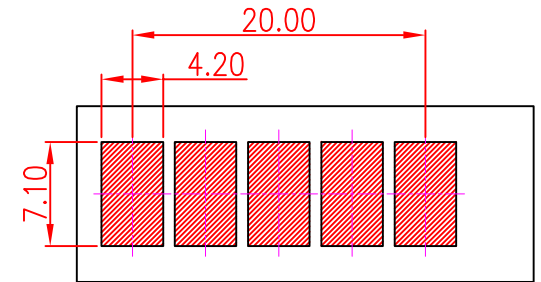
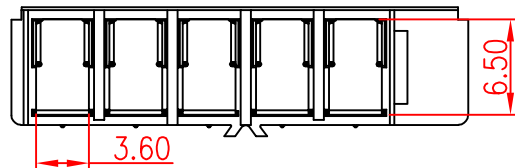
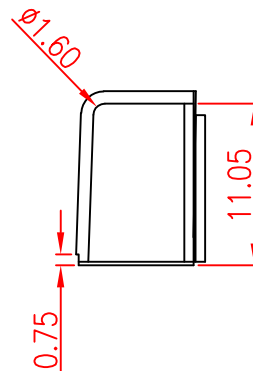
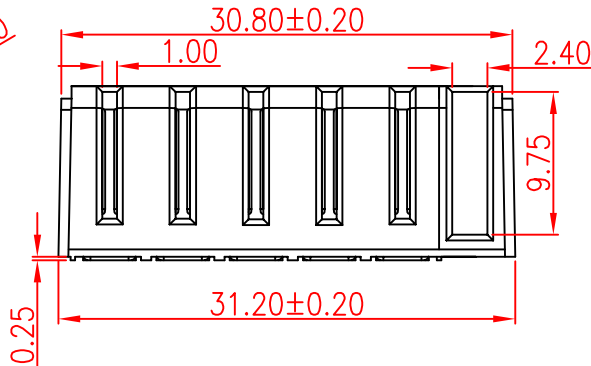
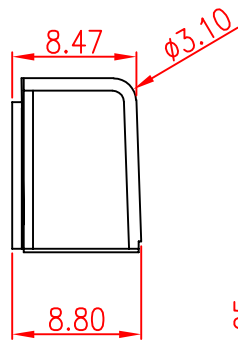
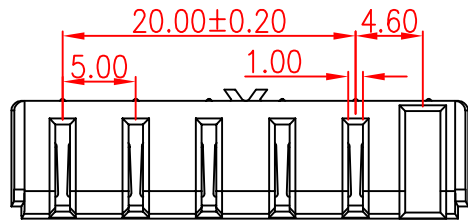
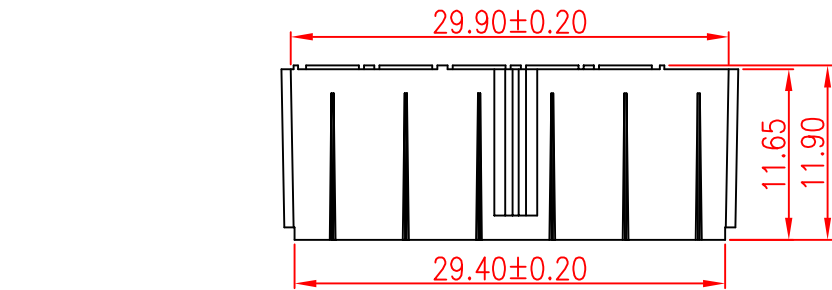
1. 产品规格:

- 1-1. 额定电压:30V
- 1-2. 耐电压:1000V AC MIN.
- 1-3. 接触阻抗:30mΩ MAX. INITIAL;40mΩ MAX AFTER 3000 CYCLES
- 1-4. 绝缘电阻:1000MΩ MIN
- 1-5. 工作温度:-25°C TO +80°C

2. 材质:

- 2.1胶芯: PA9T UL94V-0/LCP BLACK
- 2.2端子: 合金铜, 镍底, GOLD

3. 所用材质须符合RoHS要求



RECOMMENDED P.C.BOARD LAYOUT

东莞市溪榜电子有限公司
DONG GUAN XI BANG ELECTRONICS CO., LTD.

COPYRIGHT RESERVED, PLEASE DO NOT COPY.

PART NAME		CONNECTOR		DRAWING		M.M.Zhang		DWG.No.		JD-009	
PART NO.		XB-Z01F-SMD 系列		CHECK		G.C.Chen		REV.		A1	
UNIT :	TOLERANCE	OTHERWISE	UP TO 5	±0.2	ANGLE	APPROVAL	DATE	PAGE	1 OF 1	01-07-2016	
			ABOVE 5~30	±0.3						0°±3'	SCALE
mm			ABOVE 30	±0.5							
			ANGLE	±3'							